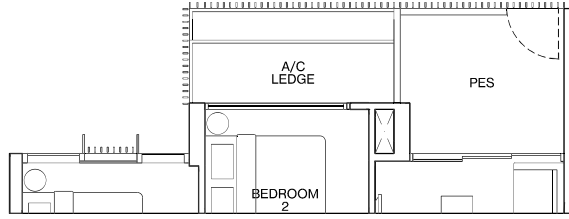


### TYPE B1-G

65m<sup>2</sup> / 700ft<sup>2</sup>

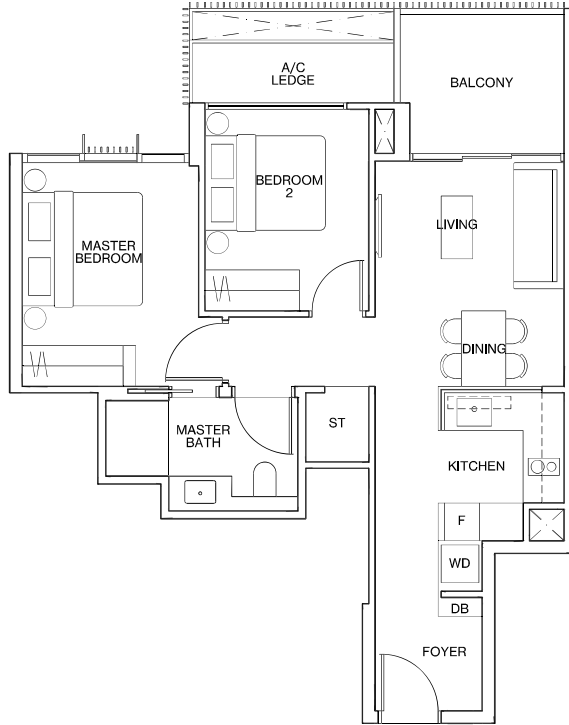
Inclusive of 6m<sup>2</sup> PES & 3m<sup>2</sup> AC Ledge  
BLOCK 6 #01-05



### TYPE B1

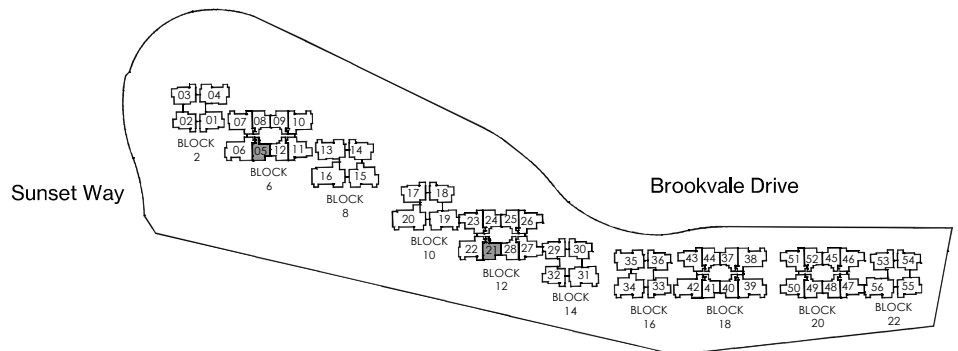
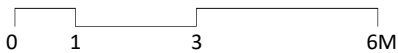
65m<sup>2</sup> / 700ft<sup>2</sup>

Inclusive of 6m<sup>2</sup> Balcony & 3m<sup>2</sup> AC Ledge  
BLOCK 6 #02-05 to #10-05  
BLOCK 12 #01-21 to #10-21

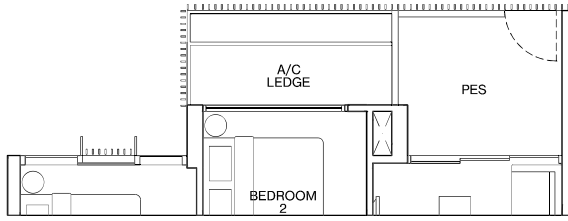


### LEGEND

- F FRIDGE
- WD WASHER DRYER COMBO
- W WASHER
- D DRYER
- ST STORE
- DB DISTRIBUTION BOARD
- \* MIRRORED UNIT
- WN WINE CHILLER

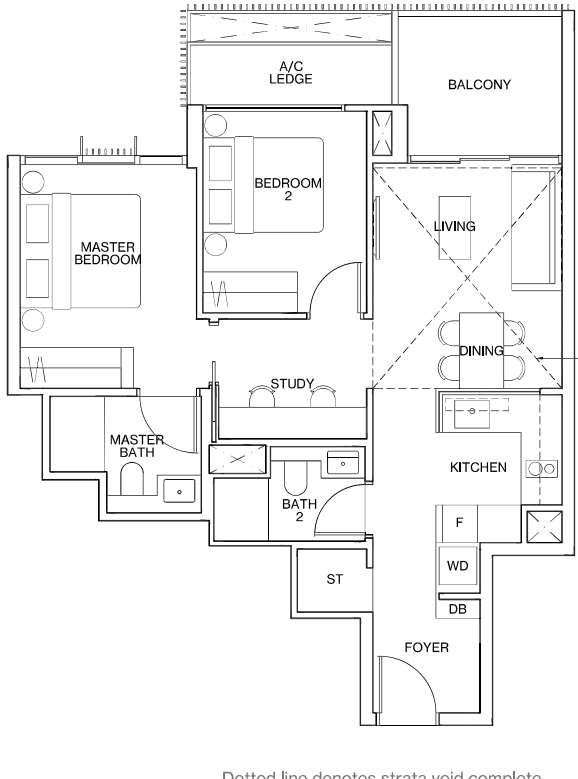


ALL PLANS ARE SUBJECT TO CHANGES BY THE RELEVANT AUTHORITIES.  
MEASUREMENTS ARE APPROXIMATE ONLY AND SUBJECT TO FINAL SURVEY.  
INFORMATION ACCURATE AT POINT OF PRINTING.  
BP NO.: A1720-00005-2018-BP01 DATED 11 SEPTEMBER 2020.



### TYPE B2-G 69m<sup>2</sup> / 743ft<sup>2</sup>

Inclusive of 7m<sup>2</sup> PES & 3m<sup>2</sup> AC Ledge  
 BLOCK 6 #01-12\*  
 BLOCK 18 #01-37, #01-44\*  
 BLOCK 20 #01-45, #01-52\*



### TYPE B2 69m<sup>2</sup> / 743ft<sup>2</sup>

Inclusive of 7m<sup>2</sup> Balcony & 3m<sup>2</sup> AC Ledge  
 BLOCK 6 #02-12\* to #11-12\*  
 BLOCK 12 #01-28\* to #11-28\*  
 BLOCK 18 #02-37 to #11-37  
 BLOCK 18 #02-44\* to #11-44\*  
 BLOCK 20 #02-45 to #11-45  
 BLOCK 20 #02-52\* to #11-52\*

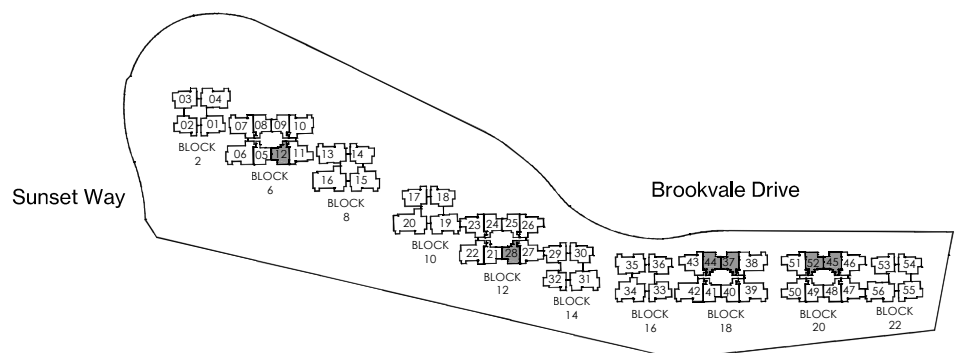
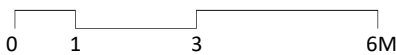
### TYPE B2-P 81m<sup>2</sup> / 872ft<sup>2</sup>

Inclusive of 12m<sup>2</sup> Strata Void,  
 7m<sup>2</sup> Balcony & 3m<sup>2</sup> AC Ledge  
 BLOCK 6 #12-12\*  
 BLOCK 12 #12-28\*  
 BLOCK 18 #12-37, #12-44\*  
 BLOCK 20 #12-45, #12-52\*

Dotted line denotes strata void complete  
 with bulkhead at units #12-12\*, #12-28\*,  
 #12-37, #12-44\*, #12-45, #12-52\*

## LEGEND

- F FRIDGE
- WD WASHER DRYER COMBO
- W WASHER
- D DRYER
- ST STORE
- DB DISTRIBUTION BOARD
- \* MIRRORED UNIT
- WN WINE CHILLER



## TYPE B3

70m<sup>2</sup> / 753ft<sup>2</sup>

Inclusive of 6m<sup>2</sup> Balcony & 3m<sup>2</sup> AC Ledge

- BLOCK 6 #02-08\* to #11-08\*
- BLOCK 6 #02-09 to #11-09
- BLOCK 12 #02-24\* to #11-24\*
- BLOCK 12 #02-25 to #11-25
- BLOCK 18 #02-40\* to #11-40\*
- BLOCK 18 #02-41 to #11-41
- BLOCK 20 #02-48\* to #11-48\*
- BLOCK 20 #02-49 to #11-49

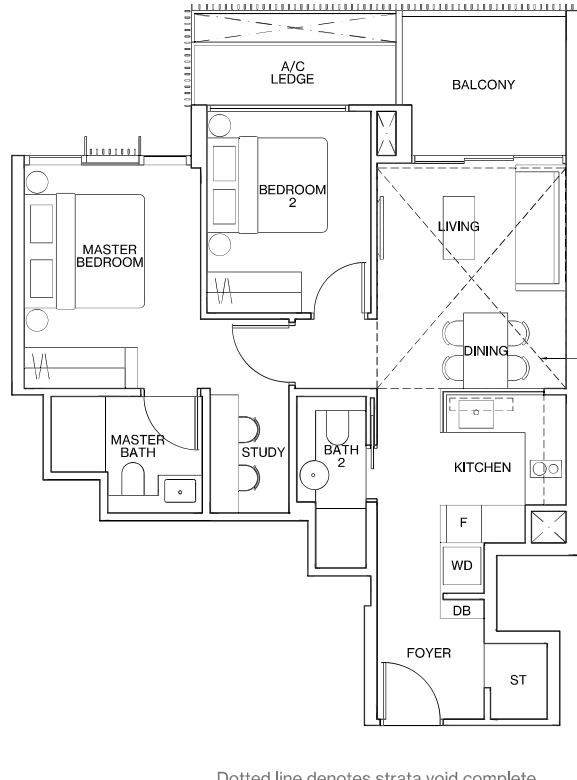
## TYPE B3-P

82m<sup>2</sup> / 883ft<sup>2</sup>

Inclusive of 12m<sup>2</sup> Strata Void,

6m<sup>2</sup> Balcony & 3m<sup>2</sup> AC Ledge

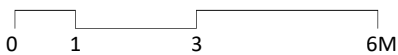
- BLOCK 6 #12-08\*, #12-09
- BLOCK 12 #12-24\*, #12-25
- BLOCK 18 #12-40\*, #12-41
- BLOCK 20 #12-48\*, #12-49



Dotted line denotes strata void complete with bulkhead at units #12-08\*, #12-09, #12-24\*, #12-25, #12-40\*, #12-41, #12-48\*, #12-49

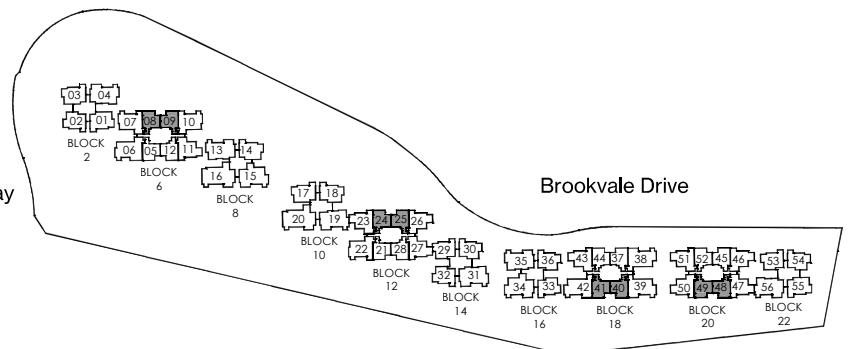
## LEGEND

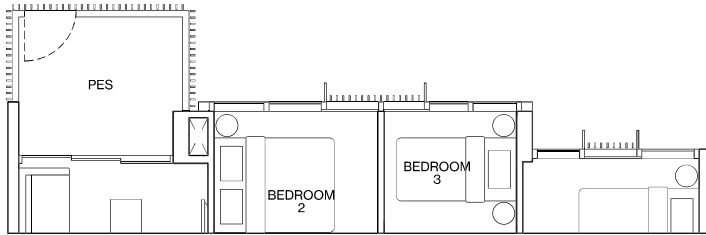
- F FRIDGE
- WD WASHER DRYER COMBO
- W WASHER
- D DRYER
- ST STORE
- DB DISTRIBUTION BOARD
- \* MIRRORED UNIT
- WN WINE CHILLER



Sunset Way

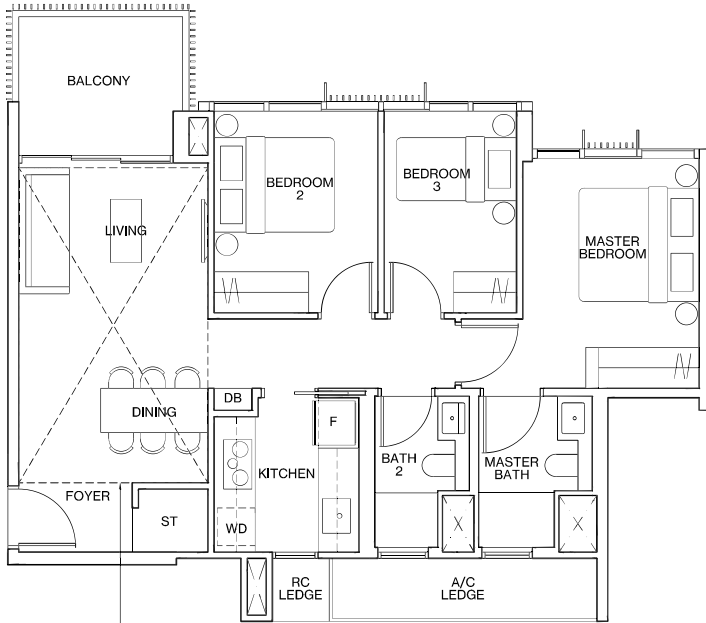
Brookvale Drive





**TYPE C1-G**  
80m<sup>2</sup> / 861ft<sup>2</sup>

Inclusive of 7m<sup>2</sup> PES & 5m<sup>2</sup> AC Ledge  
 BLOCK 2 #01-02  
 BLOCK 14 #01-29\*, #01-30  
 BLOCK 16 #01-33\*, #01-36  
 BLOCK 22 #01-53\*, #01-54



**TYPE C1**  
80m<sup>2</sup> / 861ft<sup>2</sup>

Inclusive of 7m<sup>2</sup> Balcony & 5m<sup>2</sup> AC Ledge  
 BLOCK 2 #02-02 to #11-02  
 BLOCK 14 #02-29\* to #11-29\*  
 BLOCK 14 #02-30 to #11-30  
 BLOCK 14 #01-32 to #11-32  
 BLOCK 16 #02-33\* to #11-33\*  
 BLOCK 16 #02-36 to #11-36  
 BLOCK 22 #02-53\* to #11-53\*  
 BLOCK 22 #02-54 to #11-54

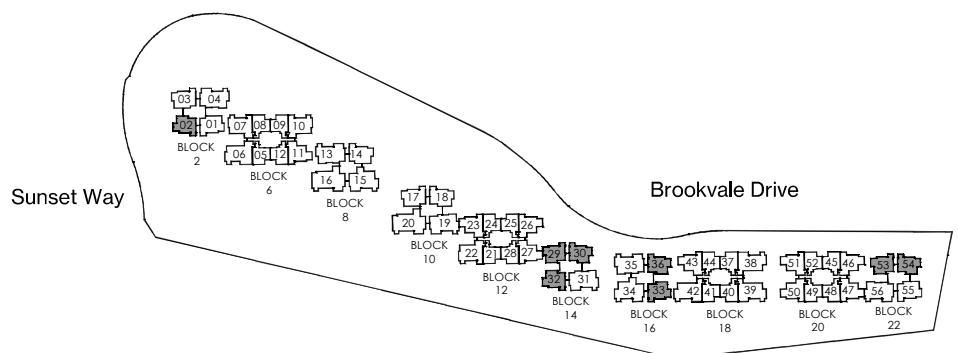
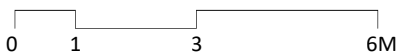
**TYPE C1-P**  
96m<sup>2</sup> / 1033ft<sup>2</sup>

Inclusive of 16m<sup>2</sup> Strata Void,  
 7m<sup>2</sup> Balcony & 5m<sup>2</sup> AC Ledge  
 BLOCK 2 #12-02  
 BLOCK 14 #12-29\*, #12-30, #12-32  
 BLOCK 16 #12-33\*, #12-36  
 BLOCK 22 #12-53\*, #12-54

Dotted line denotes strata void complete with bulkhead at units #12-02\*, #12-29\*, #12-30, #12-32\*, #12-33\*, #12-36, #12-53\*, #12-54

**LEGEND**

- F FRIDGE
- WD WASHER DRYER COMBO
- W WASHER
- D DRYER
- ST STORE
- DB DISTRIBUTION BOARD
- \* MIRRORED UNIT
- WN WINE CHILLER



ALL PLANS ARE SUBJECT TO CHANGES BY THE RELEVANT AUTHORITIES.  
 MEASUREMENTS ARE APPROXIMATE ONLY AND SUBJECT TO FINAL SURVEY.  
 INFORMATION ACCURATE AT POINT OF PRINTING.  
 BP NO.: A1720-00005-2018-BP01 DATED 11 SEPTEMBER 2020.

## TYPE C2-G

87m<sup>2</sup> / 936ft<sup>2</sup>

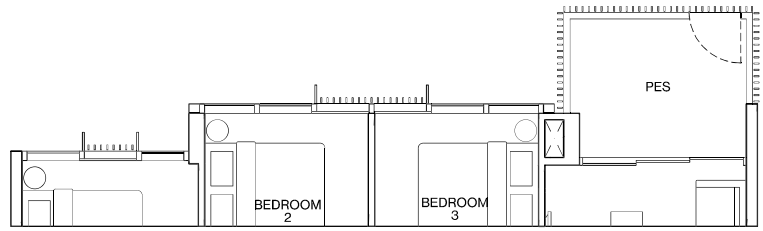
Inclusive of 7m<sup>2</sup> PES & 5m<sup>2</sup> AC Ledge

BLOCK 2 #01-01, #01-03

BLOCK 8 #01-14\*

BLOCK 10 #01-17, #01-18\*

BLOCK 22 #01-55



## TYPE C2

87m<sup>2</sup> / 936ft<sup>2</sup>

Inclusive of 7m<sup>2</sup> Balcony & 5m<sup>2</sup> AC Ledge

BLOCK 2 #02-01 to #11-01

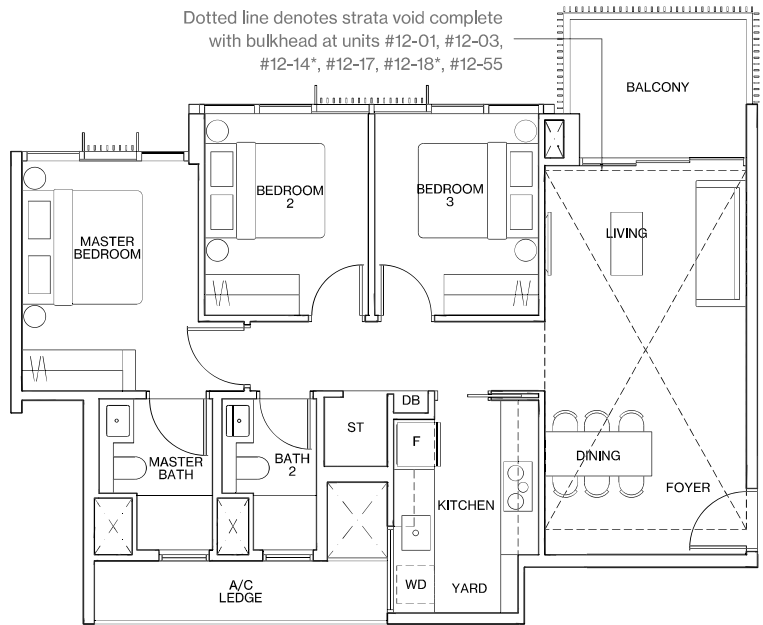
BLOCK 2 #02-03 to #11-03

BLOCK 8 #02-14\* to #11-14\*

BLOCK 10 #02-17 to #11-17

BLOCK 10 #02-18\* to #11-18\*

BLOCK 22 #02-55 to #11-55



## TYPE C2-P

107m<sup>2</sup> / 1152ft<sup>2</sup>

Inclusive of 20m<sup>2</sup> Strata Void,

7m<sup>2</sup> Balcony & 5m<sup>2</sup> AC Ledge

BLOCK 2 #12-01, #12-03

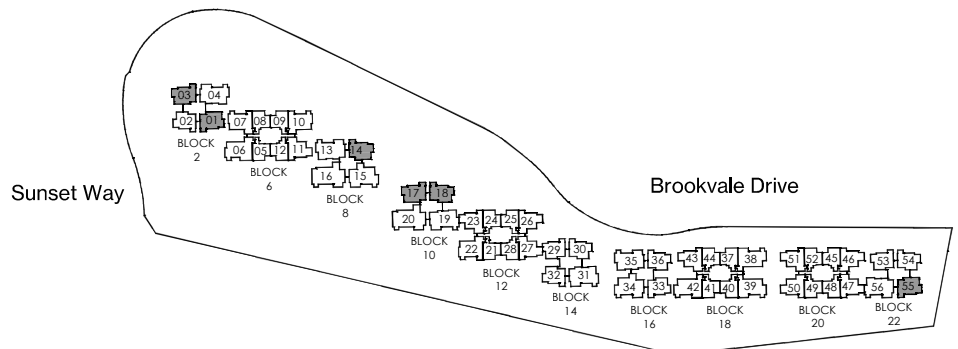
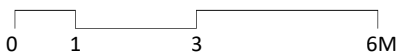
BLOCK 8 #12-14\*

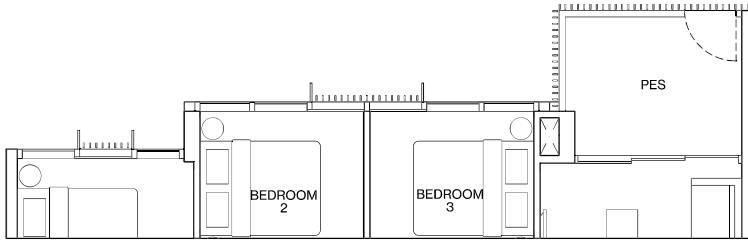
BLOCK 10 #12-17, #12-18\*

BLOCK 22 #12-55

## LEGEND

F	FRIDGE
WD	WASHER DRYER COMBO
W	WASHER
D	DRYER
ST	STORE
DB	DISTRIBUTION BOARD
*	MIRRORED UNIT
WN	WINE CHILLER

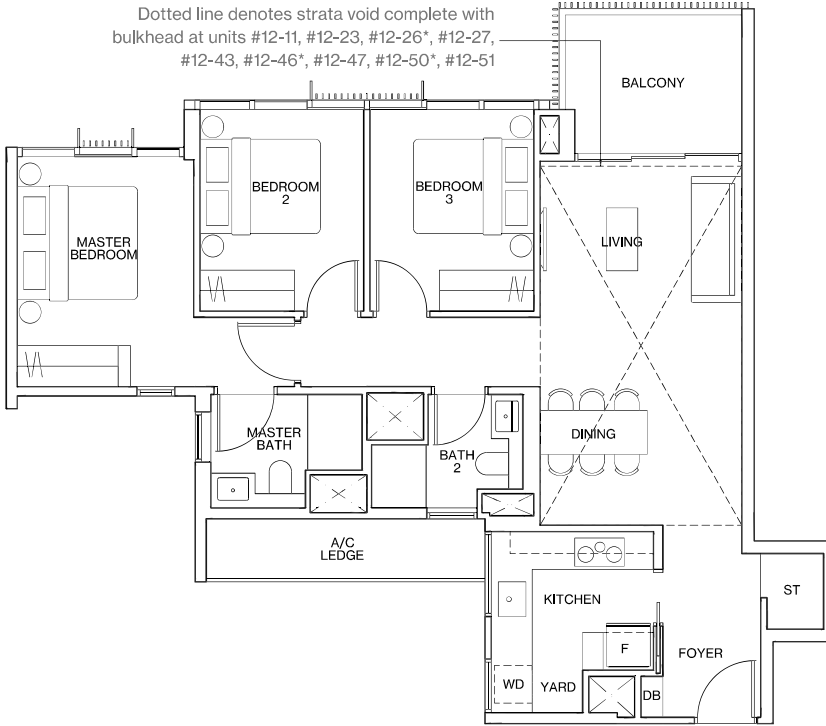




### TYPE C3-G

91m<sup>2</sup> / 980ft<sup>2</sup>

- Inclusive of 7m<sup>2</sup> PES & 5m<sup>2</sup> AC Ledge
- BLOCK 6 #01-11
  - BLOCK 12 #01-23, #01-26\*
  - BLOCK 18 #01-43
  - BLOCK 20 #01-46\*, #01-47, #01-50\*, #01-51



### TYPE C3

91m<sup>2</sup> / 980ft<sup>2</sup>

- Inclusive of 7m<sup>2</sup> Balcony & 5m<sup>2</sup> AC Ledge
- BLOCK 6 #02-11 to #11-11
  - BLOCK 12 #02-23 to #11-23
  - BLOCK 12 #02-26\* to #11-26\*
  - BLOCK 12 #01-27 to #11-27
  - BLOCK 18 #02-43 to #11-43
  - BLOCK 20 #02-46\* to #11-46\*
  - BLOCK 20 #02-47 to #11-47
  - BLOCK 20 #02-50\* to #11-50\*
  - BLOCK 20 #02-51 to #11-51

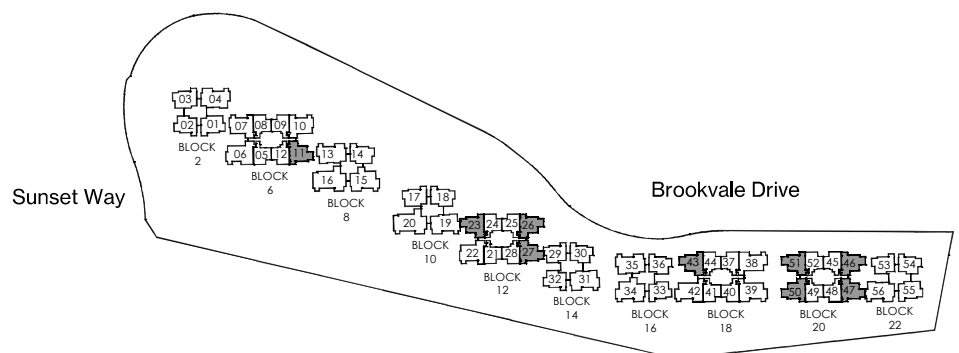
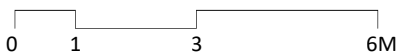
### TYPE C3-P

111m<sup>2</sup> / 1195ft<sup>2</sup>

- Inclusive of 20m<sup>2</sup> Strata Void, 7m<sup>2</sup> Balcony & 5m<sup>2</sup> AC Ledge
- BLOCK 6 #12-11
  - BLOCK 12 #12-23, #12-26\*, #12-27
  - BLOCK 18 #12-43
  - BLOCK 20 #12-46\*, #12-47, #12-50\*, #12-51

## LEGEND

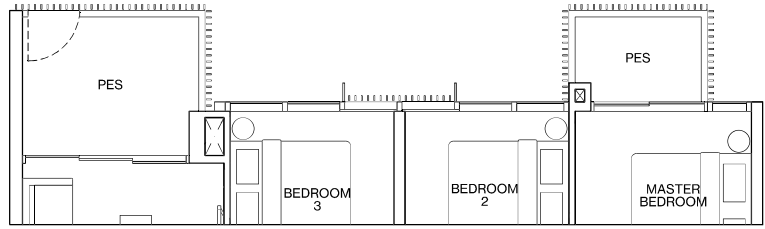
- F FRIDGE
- WD WASHER DRYER COMBO
- W WASHER
- D DRYER
- ST STORE
- DB DISTRIBUTION BOARD
- \* MIRRORED UNIT
- WN WINE CHILLER



### TYPE C4-G

103m<sup>2</sup> / 1109ft<sup>2</sup>

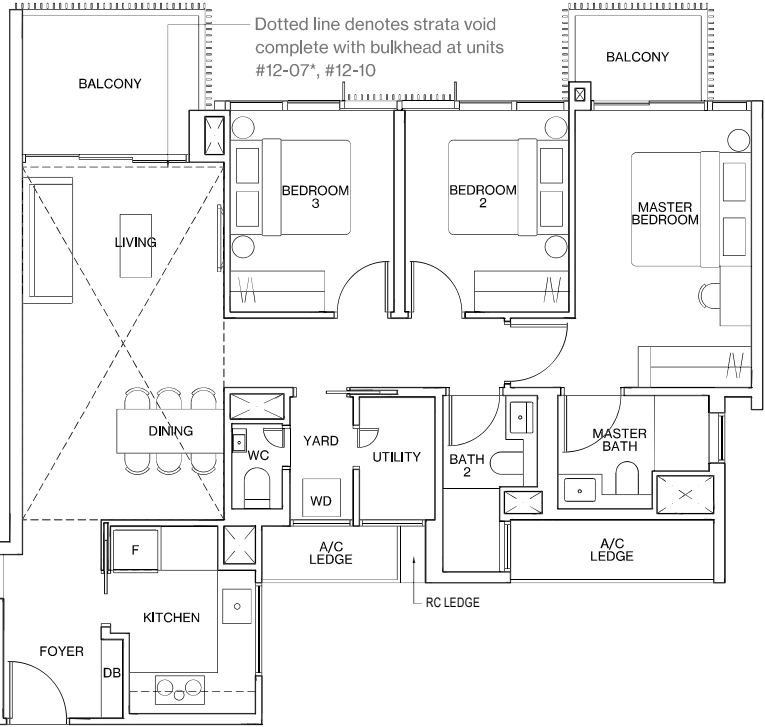
Inclusive of 10m<sup>2</sup> PES & 6m<sup>2</sup> AC Ledge  
BLOCK 6 #01-07\*, #01-10



### TYPE C4

103m<sup>2</sup> / 1109ft<sup>2</sup>

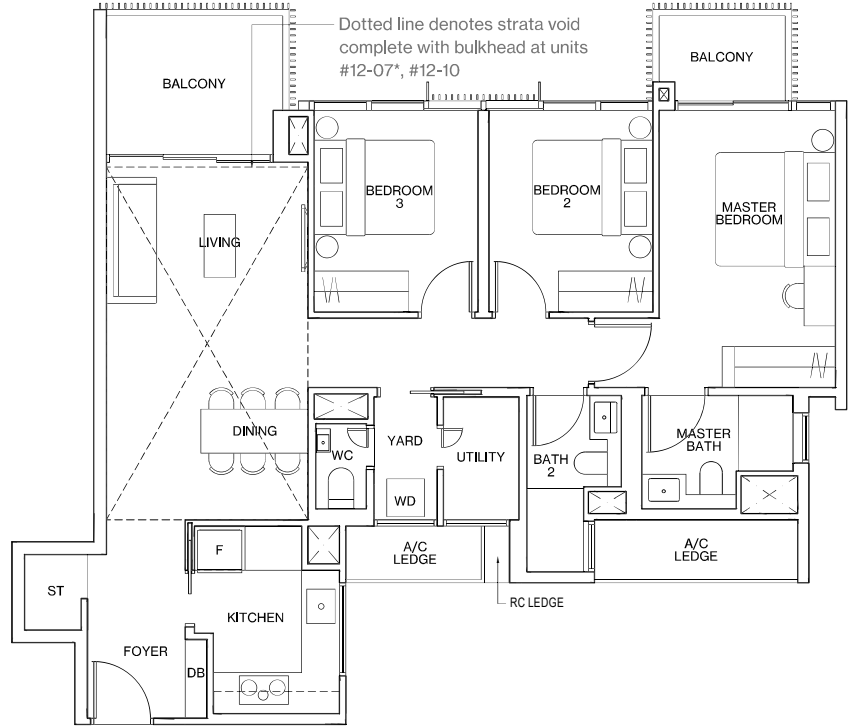
Inclusive of 10m<sup>2</sup> Balcony & 6m<sup>2</sup> AC Ledge  
BLOCK 6 #02-07\* to #11-07\*  
BLOCK 6 #02-10 to #11-10  
BLOCK 12 #01-22 to #10-22



### TYPE C4-P

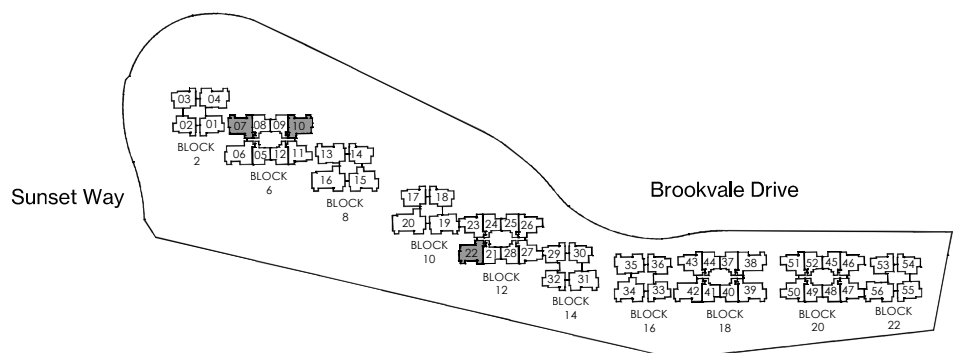
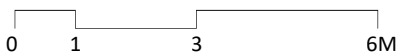
122m<sup>2</sup> / 1313ft<sup>2</sup>

Inclusive of 19m<sup>2</sup> Strata Void, 10m<sup>2</sup> Balcony & 6m<sup>2</sup> AC Ledge  
BLOCK 6 #12-07\*, #12-10

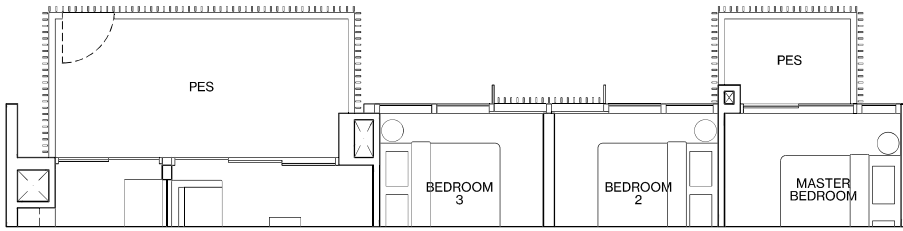


### LEGEND

- F FRIDGE
- WD WASHER DRYER COMBO
- W WASHER
- D DRYER
- ST STORE
- DB DISTRIBUTION BOARD
- \* MIRRORED UNIT
- WN WINE CHILLER

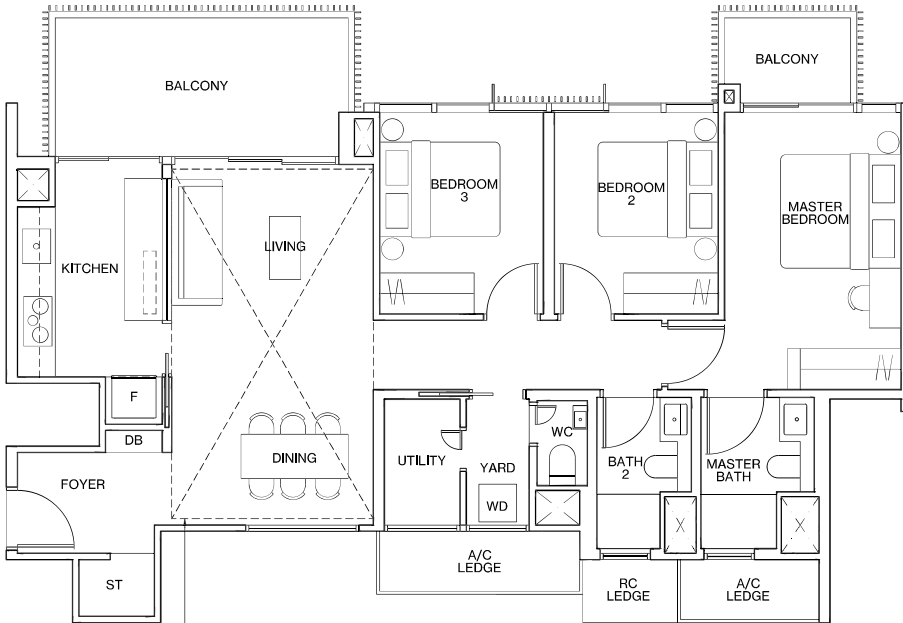


ALL PLANS ARE SUBJECT TO CHANGES BY THE RELEVANT AUTHORITIES.  
MEASUREMENTS ARE APPROXIMATE ONLY AND SUBJECT TO FINAL SURVEY.  
INFORMATION ACCURATE AT POINT OF PRINTING.  
BP NO.: A1720-00005-2018-BP01 DATED 11 SEPTEMBER 2020.



### TYPE C5-G 109m<sup>2</sup> / 1173ft<sup>2</sup>

Inclusive of 14m<sup>2</sup> PES & 6m<sup>2</sup> AC Ledge  
 BLOCK 2 #01-04  
 BLOCK 8 #01-13\*  
 BLOCK 16 #01-35\*  
 BLOCK 22 #01-56



### TYPE C5 109m<sup>2</sup> / 1173ft<sup>2</sup>

Inclusive of 14m<sup>2</sup> Balcony & 6m<sup>2</sup> AC Ledge  
 BLOCK 2 #02-04 to #11-04  
 BLOCK 8 #02-13\* to #11-13\*  
 BLOCK 10 #01-19\* to #11-19\*  
 BLOCK 14 #01-31\* to #11-31\*  
 BLOCK 16 #02-35\* to #11-35\*  
 BLOCK 22 #02-56 to #11-56

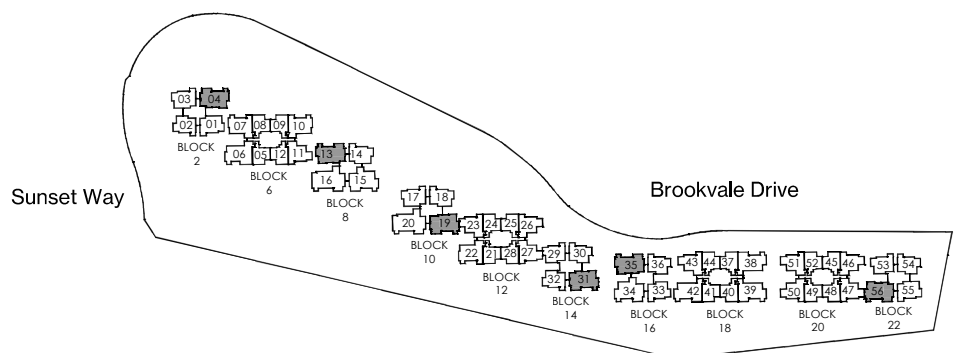
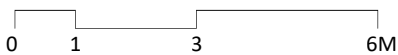
### TYPE C5-P 128m<sup>2</sup> / 1378ft<sup>2</sup>

Inclusive of 19m<sup>2</sup> Strata Void,  
 14m<sup>2</sup> Balcony & 6m<sup>2</sup> AC Ledge  
 BLOCK 2 #12-04  
 BLOCK 8 #12-13\*  
 BLOCK 10 #12-19\*  
 BLOCK 14 #12-31\*  
 BLOCK 16 #12-35\*  
 BLOCK 22 #12-56

Dotted line denotes strata void complete with bulkhead at units #12-04, #12-13\*, #12-19\*, #12-31\*, #12-35\*, #12-56

## LEGEND

- F FRIDGE
- WD WASHER DRYER COMBO
- W WASHER
- D DRYER
- ST STORE
- DB DISTRIBUTION BOARD
- \* MIRRORED UNIT
- WN WINE CHILLER

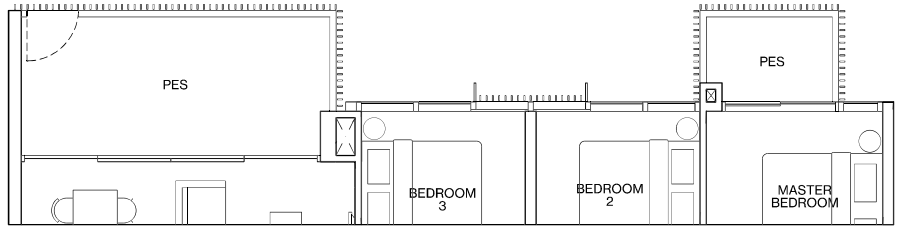




### TYPE C6-G

111m<sup>2</sup> / 1195ft<sup>2</sup>

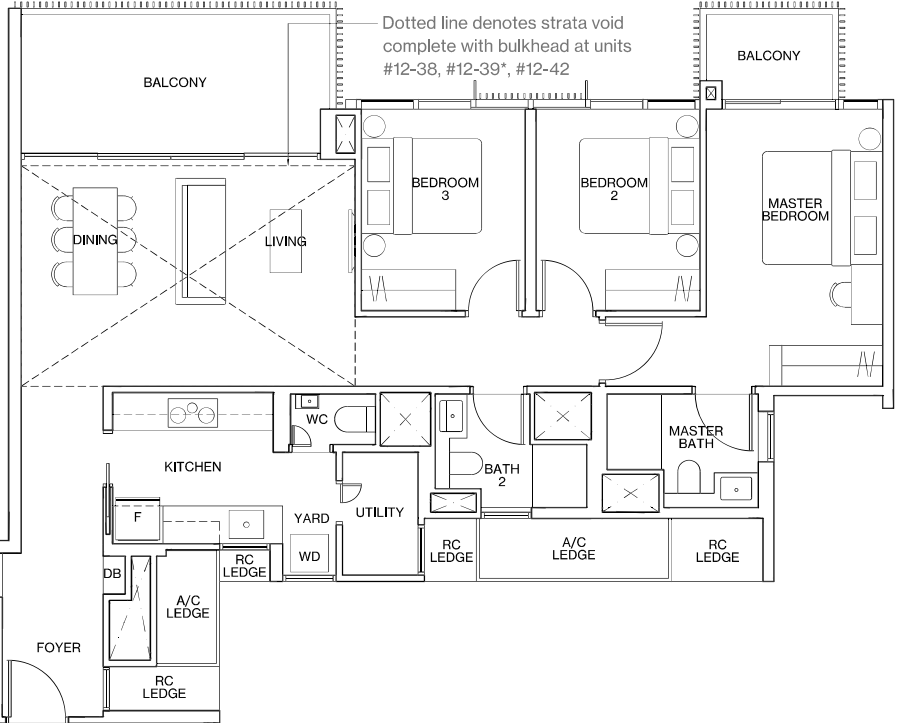
Inclusive of 15m<sup>2</sup> PES & 5m<sup>2</sup> AC Ledge  
BLOCK 18 #01-38, #01-39\*, #01-42



### TYPE C6

111m<sup>2</sup> / 1195ft<sup>2</sup>

Inclusive of 15m<sup>2</sup> Balcony & 5m<sup>2</sup> AC Ledge  
BLOCK 18 #02-38 to #11-38  
BLOCK 18 #02-39\* to #11-39\*  
BLOCK 18 #02-42 to #11-42



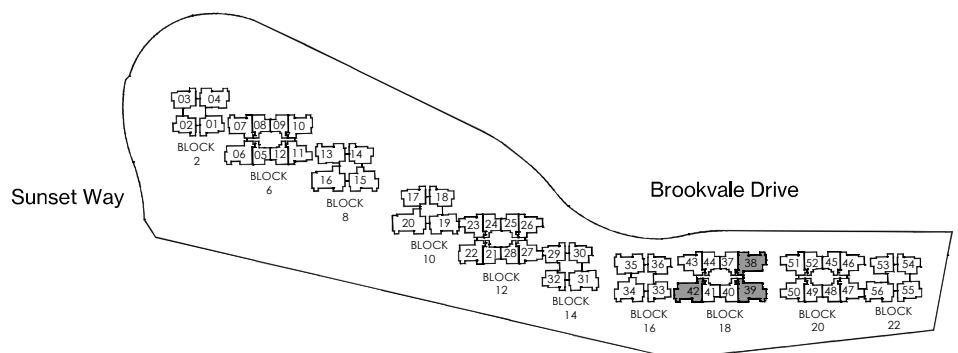
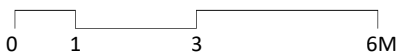
### TYPE C6-P

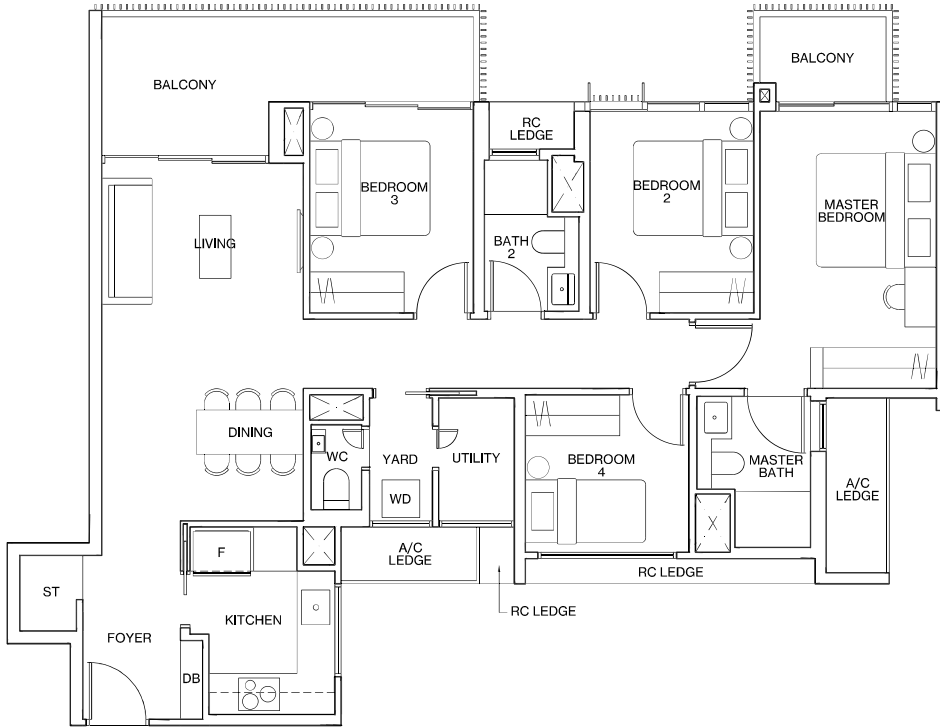
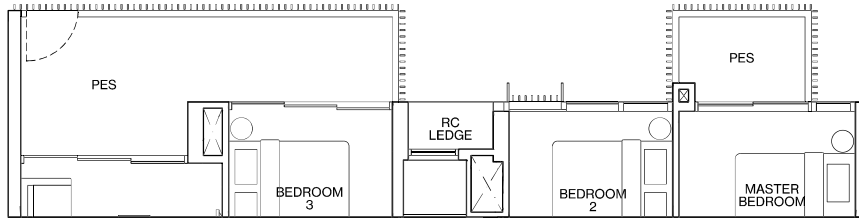
131m<sup>2</sup> / 1410ft<sup>2</sup>

Inclusive of 20m<sup>2</sup> Strata Void,  
15m<sup>2</sup> Balcony & 5m<sup>2</sup> AC Ledge  
BLOCK 18 #12-38, #12-39\*, #12-42

### LEGEND

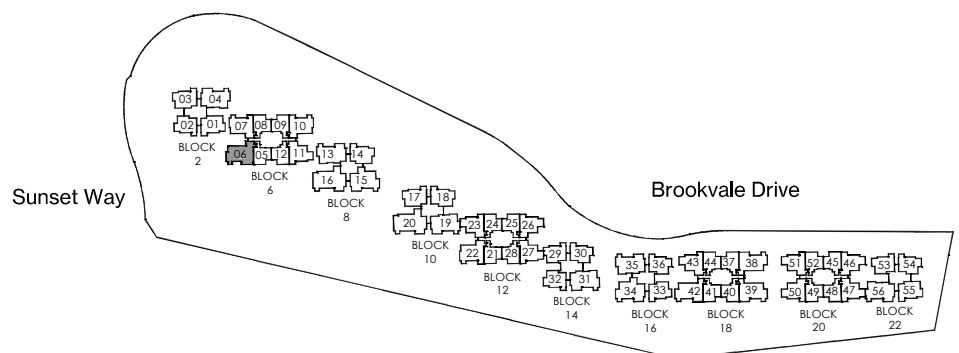
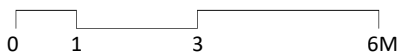
- F FRIDGE
- WD WASHER DRYER COMBO
- W WASHER
- D DRYER
- ST STORE
- DB DISTRIBUTION BOARD
- \* MIRRORED UNIT
- WN WINE CHILLER





### LEGEND

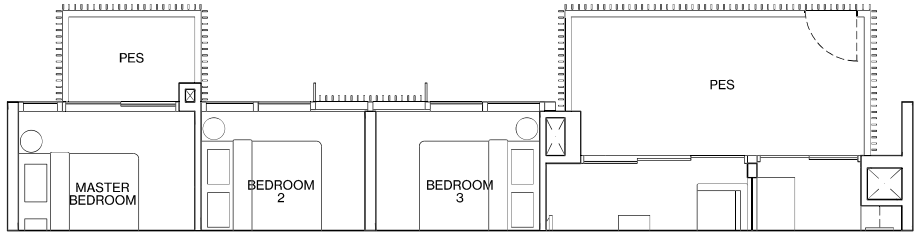
- F FRIDGE
- WD WASHER DRYER COMBO
- W WASHER
- D DRYER
- ST STORE
- DB DISTRIBUTION BOARD
- \* MIRRORED UNIT
- WN WINE CHILLER



### TYPE D2-G

117m<sup>2</sup> / 1259ft<sup>2</sup>

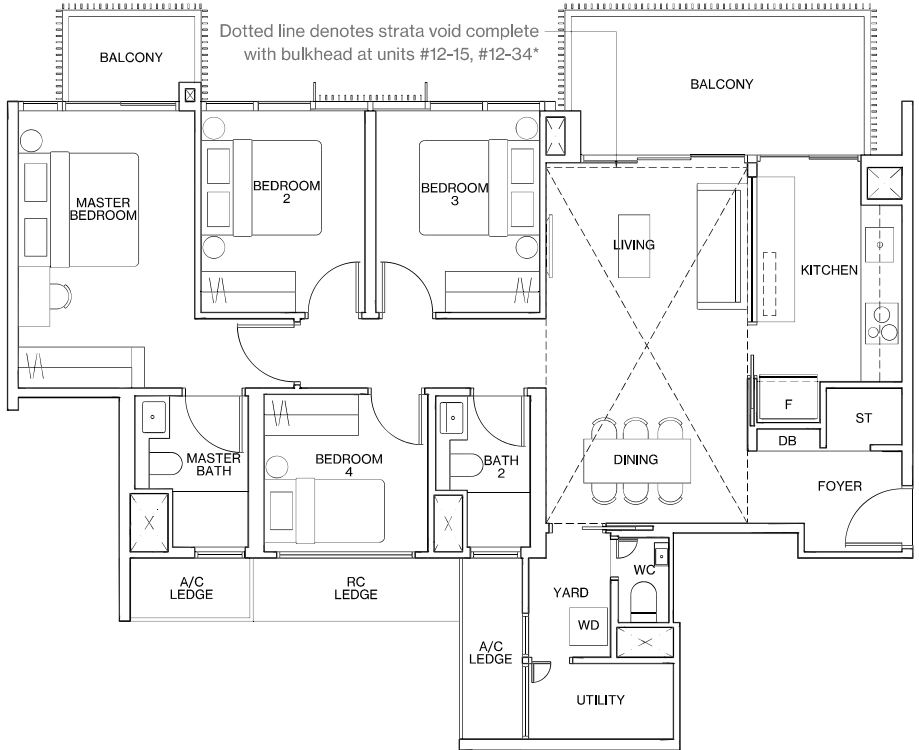
Inclusive of 14m<sup>2</sup> PES & 5m<sup>2</sup> AC Ledge  
 BLOCK 8 #01-15  
 BLOCK 16 #01-34\*



### TYPE D2

117m<sup>2</sup> / 1259ft<sup>2</sup>

Inclusive of 14m<sup>2</sup> Balcony & 5m<sup>2</sup> AC Ledge  
 BLOCK 8 #02-15 to #11-15  
 BLOCK 16 #02-34\* to #11-34\*



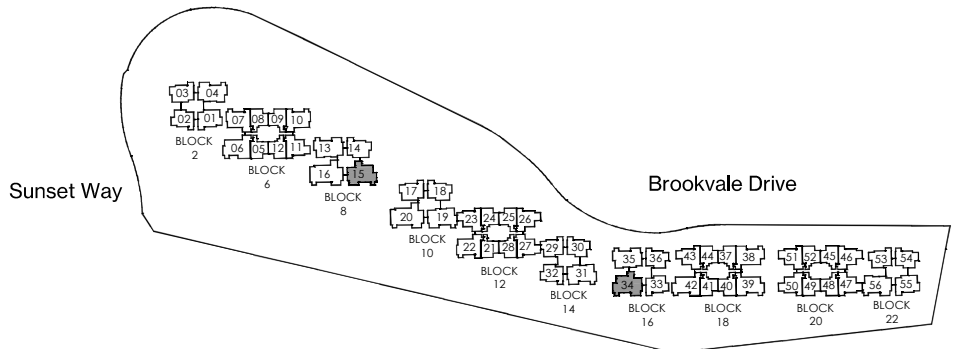
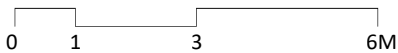
### TYPE D2-P

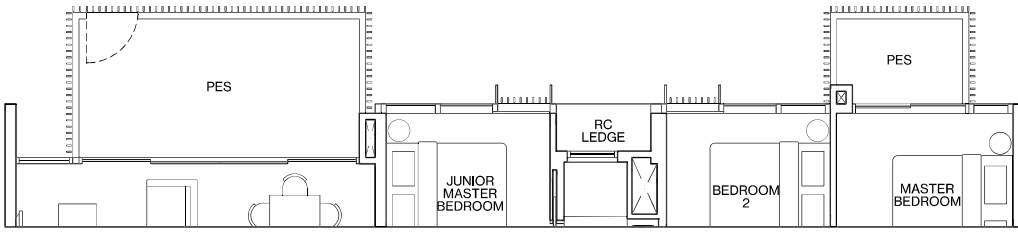
136m<sup>2</sup> / 1464ft<sup>2</sup>

Inclusive of 19m<sup>2</sup> Strata Void,  
 14m<sup>2</sup> Balcony & 5m<sup>2</sup> AC Ledge  
 BLOCK 8 #12-15  
 BLOCK 16 #12-34\*

### LEGEND

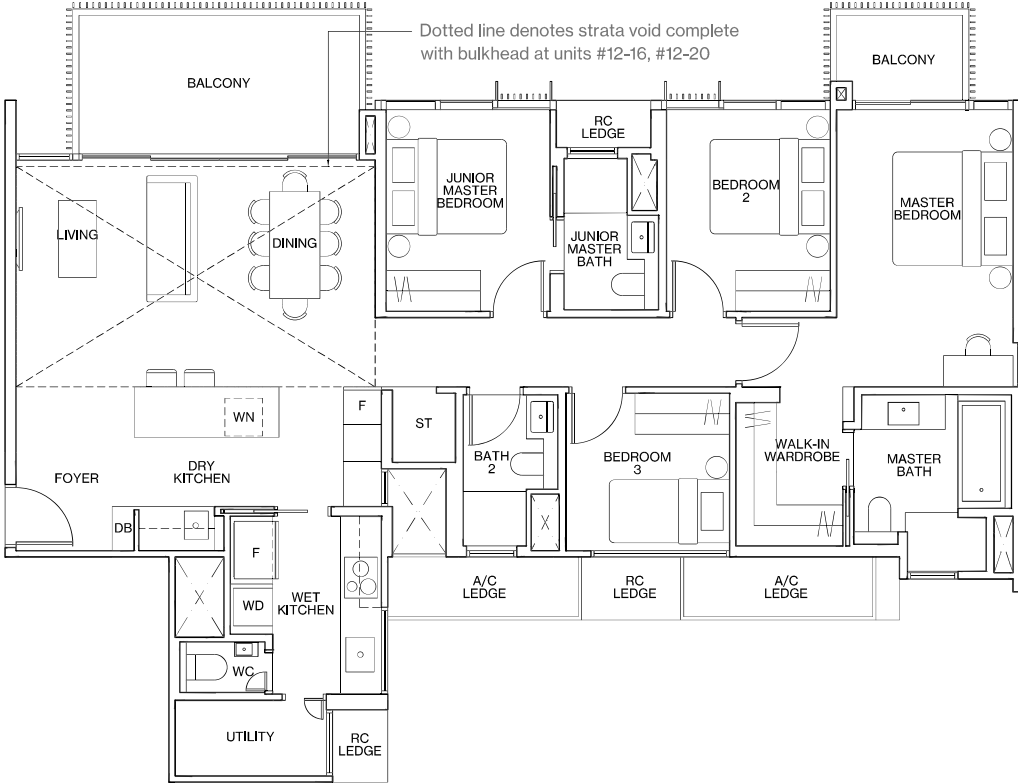
- F FRIDGE
- WD WASHER DRYER COMBO
- W WASHER
- D DRYER
- ST STORE
- DB DISTRIBUTION BOARD
- \* MIRRORED UNIT
- WN WINE CHILLER





**TYPE D3-G**  
**137m<sup>2</sup> / 1475ft<sup>2</sup>**

Inclusive of 14m<sup>2</sup> PES & 6m<sup>2</sup> AC Ledge  
 BLOCK 8 #01-16



**TYPE D3**  
**137m<sup>2</sup> / 1475ft<sup>2</sup>**

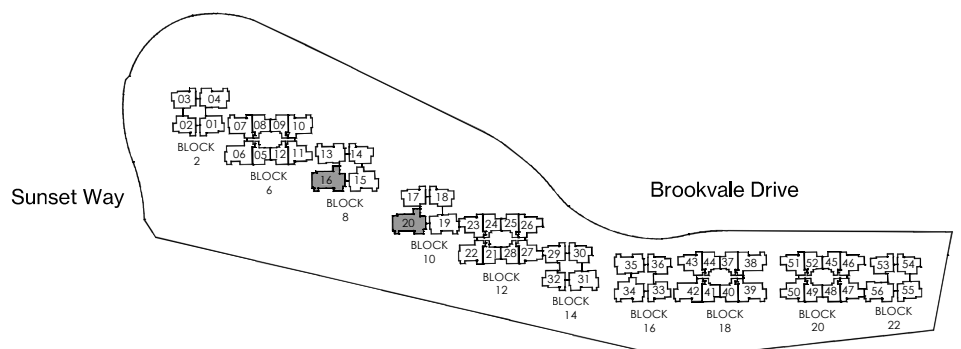
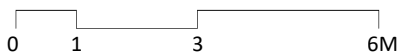
Inclusive of 14m<sup>2</sup> Balcony & 6m<sup>2</sup> AC Ledge  
 BLOCK 8 #02-16 to #11-16  
 BLOCK 10 #01-20 to #11-20

**TYPE D3-P**  
**159m<sup>2</sup> / 1711ft<sup>2</sup>**

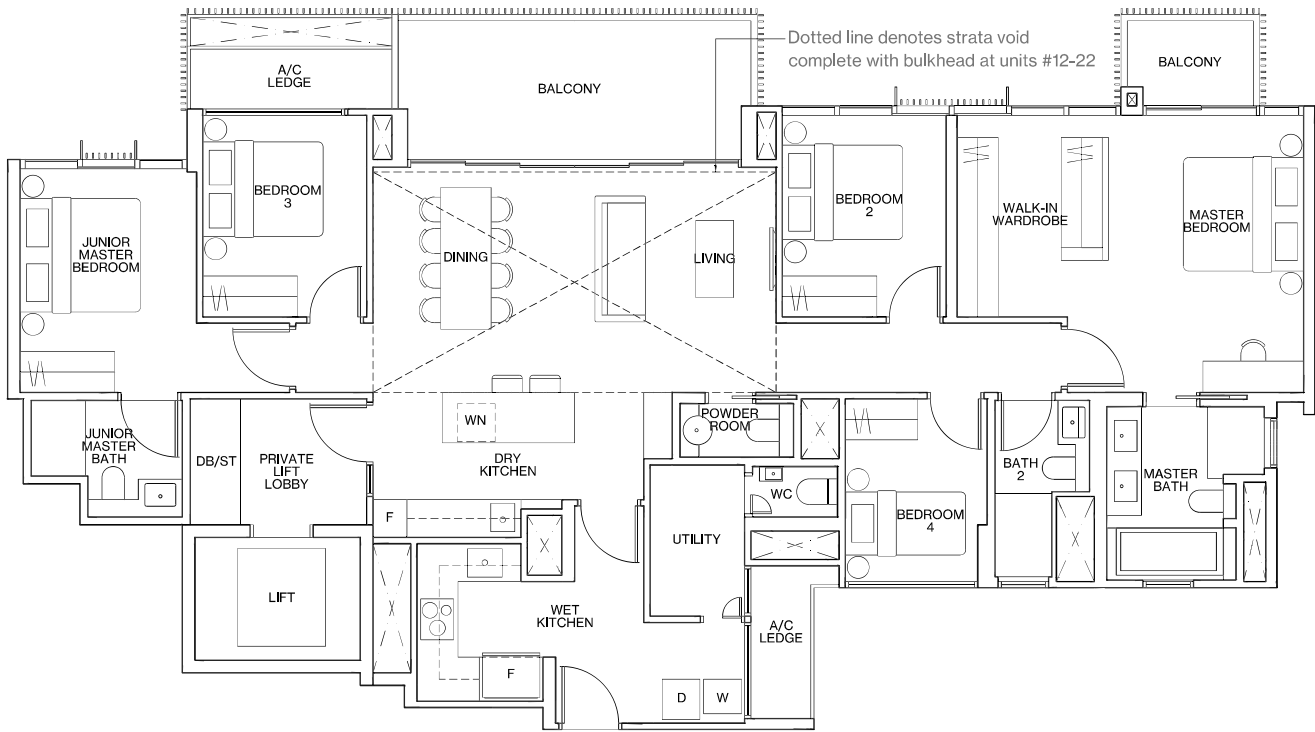
Inclusive of 22m<sup>2</sup> Strata Void,  
 14m<sup>2</sup> Balcony & 6m<sup>2</sup> AC Ledge  
 BLOCK 8 #12-16  
 BLOCK 10 #12-20

**LEGEND**

- F FRIDGE
- WD WASHER DRYER COMBO
- W WASHER
- D DRYER
- ST STORE
- DB DISTRIBUTION BOARD
- \* MIRRORED UNIT
- WN WINE CHILLER



ALL PLANS ARE SUBJECT TO CHANGES BY THE RELEVANT AUTHORITIES.  
 MEASUREMENTS ARE APPROXIMATE ONLY AND SUBJECT TO FINAL SURVEY.  
 INFORMATION ACCURATE AT POINT OF PRINTING.  
 BP NO.: A1720-00005-2018-BP01 DATED 11 SEPTEMBER 2020.



Dotted line denotes strata void complete with bulkhead at units #12-22

### TYPE E1

169m<sup>2</sup> / 1819ft<sup>2</sup>

Inclusive of 6m<sup>2</sup> Private Lift Lobby,  
17m<sup>2</sup> Balcony & 7m<sup>2</sup> AC Ledge  
BLOCK 12 #11-22

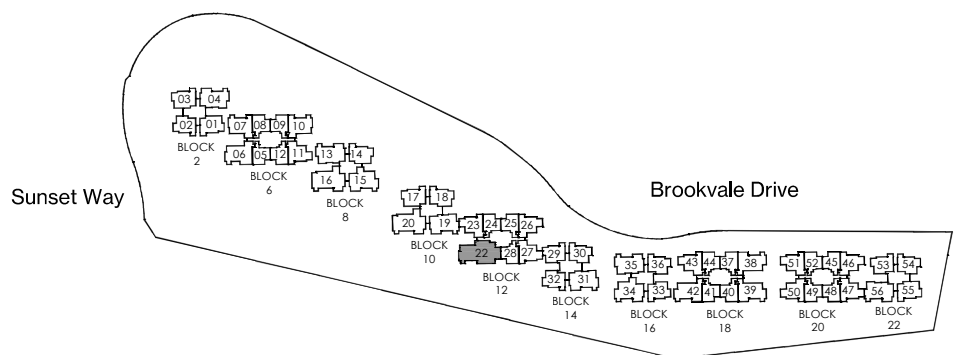
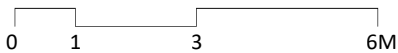
### TYPE E1-P

193m<sup>2</sup> / 2077ft<sup>2</sup>

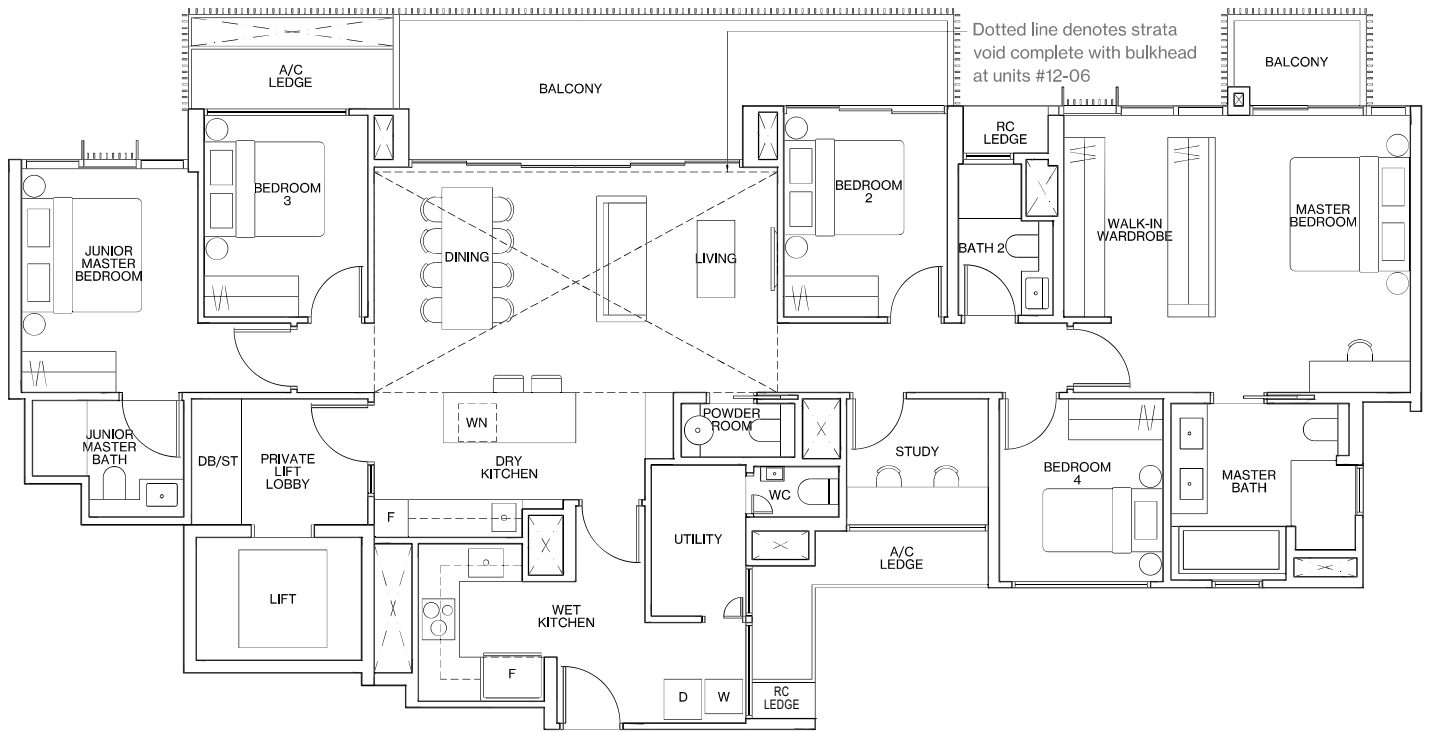
Inclusive of 24m<sup>2</sup> Strata Void,  
6m<sup>2</sup> Private Lift Lobby,  
17m<sup>2</sup> Balcony & 7m<sup>2</sup> AC Ledge  
BLOCK 12 #12-22

### LEGEND

- F FRIDGE
- WD WASHER DRYER COMBO
- W WASHER
- D DRYER
- ST STORE
- DB DISTRIBUTION BOARD
- \* MIRRORED UNIT
- WN WINE CHILLER



ALL PLANS ARE SUBJECT TO CHANGES BY THE RELEVANT AUTHORITIES.  
MEASUREMENTS ARE APPROXIMATE ONLY AND SUBJECT TO FINAL SURVEY.  
INFORMATION ACCURATE AT POINT OF PRINTING.  
BP NO.: A1720-00005-2018-BP01 DATED 11 SEPTEMBER 2020.



### TYPE E2

184m<sup>2</sup> / 1981ft<sup>2</sup>

Inclusive of 6m<sup>2</sup> Private Lift Lobby,  
21m<sup>2</sup> Balcony & 9m<sup>2</sup> AC Ledge  
BLOCK 6 #11-06

### TYPE E2-P

208m<sup>2</sup> / 2239ft<sup>2</sup>

Inclusive of 24m<sup>2</sup> Strata Void,  
6m<sup>2</sup> Private Lift Lobby,  
21m<sup>2</sup> Balcony & 9m<sup>2</sup> AC Ledge  
BLOCK 6 #12-06

## LEGEND

F	FRIDGE
WD	WASHER DRYER COMBO
W	WASHER
D	DRYER
ST	STORE
DB	DISTRIBUTION BOARD
*	MIRRORED UNIT
WN	WINE CHILLER

